

**Name:MKI67 mouse monoclonal antibody,clone UMAB107**

**Catalog: UM800033**

**Product Data Sheet - UltraMAB**

Gene Name:Homo sapiens antigen identified by monoclonal antibody Ki-67 (MKI67), transcript variant 1  
GeneBank accession: NM\_002417  
Isotype: IgG2a

Reactivity: Human  
Test application: WB  
Clone Name: Clone UMAB107

**Gene Synonym:** KIA

**Validation Data:**

**Guaranteed Applications:** IHC

**Western Blot**

**Suggested Dilutions:** IHC 1:1000,

**Immunogen:** Human recombinant protein fragment corresponding to amino acids 1160-1493 of human MKI67 (NP\_002408) produced in E.coli.

**Components:**

- MKI67 mouse monoclonal antibody,clone UMAB107 (UM800033)

**Amount:**

UM800033 100ul

**Concentration:** 0.5~1.0 mg/ml (Lot Dependent)

**Storage Condition:** Shipped at 4C. Upon delivery store at -20C. Dilute in PBS (pH7.3) before use. Stable for 12 months from date of receipt. Avoid repeated freeze-thaws.

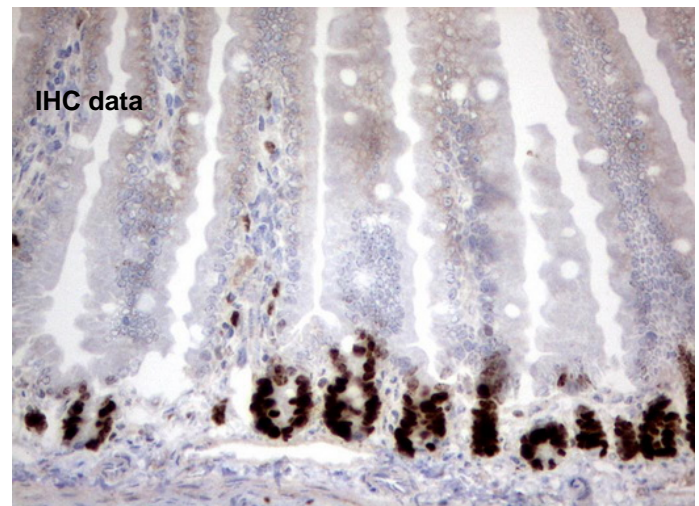
**Buffer:** PBS (PH 7.3) containing 1% BSA, 50% glycerol and 0.02% sodium azide.

**Purification:**

Purified from mouse ascites fluids by affinity chromatography

**Background:**

This gene encodes a nuclear protein that is associated with and may be necessary for cellular proliferation. Alternatively spliced transcript variants have been described. A related pseudogene exists on chromosome X. [provided by RefSeq, Mar 2009].



Immunohistochemical staining of paraffin-embedded mouse colon tissue using anti-MKI67 mouse monoclonal antibody. (UM800033)

**Related Product:**

TrueORF cDNA clones  
VERIFY Tagged Antigen lysates  
HuSH-29 shRNA  
Western Blot reagents  
Anti-myc/DDK tag antibodies

\* Peptide sequence of the DDK-tag (Flag®): N-DYKDDDDK-C Flag® is a registered trademark of Sigma-Aldrich

\* More validation images may be available on our website:

<http://www.origene.com/antibody/UM800033.aspx>

***This product is to be used for laboratory only. Not for diagnostic or therapeutic use.***

© 2013 OriGene Technologies, Inc. 9620 Medical Center Dr., Suite 200, Rockville, MD 20850