

Name: TYMP mouse monoclonal antibody, clone UMAB90
Product Data Sheet - UltraMAB

Catalog: UM800021

Gene Name: Homo sapiens thymidine phosphorylase (TYMP), nuclear gene encoding mitochondrial protein, transcript variant 2
GeneBank accession: NM_001953
Isotype: IgG1

Reactivity: Human
Test application: WB
Clone Name: Clone UMAB90

Gene Synonym: ECGF; ECGF1; hPD-ECGF; MEDPS1; MNGIE; MTDPS1; PDECGF; TP

Validation Data:

Western Blot

Guaranteed Applications: IHC

Suggested Dilutions: IHC 1:100,

Immunogen: Human recombinant protein fragment corresponding to amino acids 311-482 of human TYMP (NP_001944) produced in E.coli.

Components:

- TYMP mouse monoclonal antibody, clone UMAB90 (UM800021)

Amount:

UM800021 100ul

Concentration: 0.5~1.0 mg/ml (Lot Dependent)

Storage Condition: Shipped at 4C. Upon delivery store at -20C. Dilute in PBS (pH7.3) before use. Stable for 12 months from date of receipt. Avoid repeated freeze-thaws.

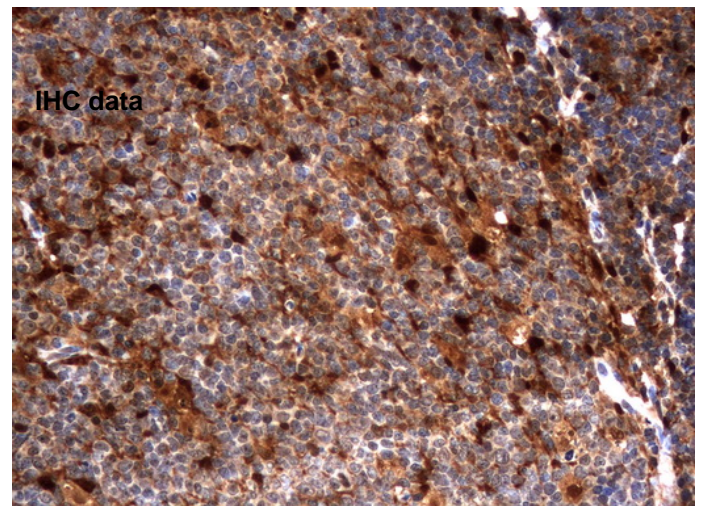
Buffer: PBS (PH 7.3) containing 1% BSA, 50% glycerol and 0.02% sodium azide.

Purification:

Purified from mouse ascites fluids by affinity chromatography

Background:

This gene encodes an angiogenic factor which promotes angiogenesis in vivo and stimulates the in vitro growth of a variety of endothelial cells. It has a highly restricted target cell specificity acting only on endothelial cells. Mutations in this gene have been associated with mitochondrial neurogastrointestinal encephalomyopathy. Multiple alternatively spliced transcript variants have been identified. [provided by RefSeq, Apr 2012].



Immunohistochemical staining of paraffin-embedded Human tonsil using anti-TYMP mouse monoclonal antibody. (UM800021)

Related Product:

TrueORF cDNA clones
VERIFY Tagged Antigen lysates
HuSH-29 shRNA
Western Blot reagents
Anti-myc/DDK tag antibodies

* Peptide sequence of the DDK-tag (Flag®): N-DYKDDDDK-C Flag® is a registered trademark of Sigma-Aldrich

* More validation images may be available on our website:

<http://www.origene.com/antibody/UM800021.aspx>

This product is to be used for laboratory only. Not for diagnostic or therapeutic use.