

Name:WFDC2 mouse monoclonal antibody,clone UMAB88

Catalog: UM800019

Product Data Sheet - UltraMAB

Gene Name:Homo sapiens WAP four-disulfide core domain 2 (WFDC2)
GeneBank accession: NM_006103
Isotype: IgG1

Reactivity: Human
Test application: WB
Clone Name: Clone UMAB88

Gene Synonym: dJ461P17.6; EDDM4; HE4; WAP5

Validation Data:

Guaranteed Applications: IHC, 10K-CHIP

Western Blot

Suggested Dilutions: IHC 1:100,

Immunogen: Human recombinant protein fragment corresponding to amino acids 31-124 of human WFDC2 (NP_006094) produced in E.coli.

Components:

- WFDC2 mouse monoclonal antibody,clone UMAB88 (UM800019)

Amount:

UM800019 100ul

Concentration: 0.5~1.0 mg/ml (Lot Dependent)

Storage Condition: Shipped at 4C. Upon delivery store at -20C. Dilute in PBS (pH7.3) before use. Stable for 12 months from date of receipt. Avoid repeated freeze-thaws.

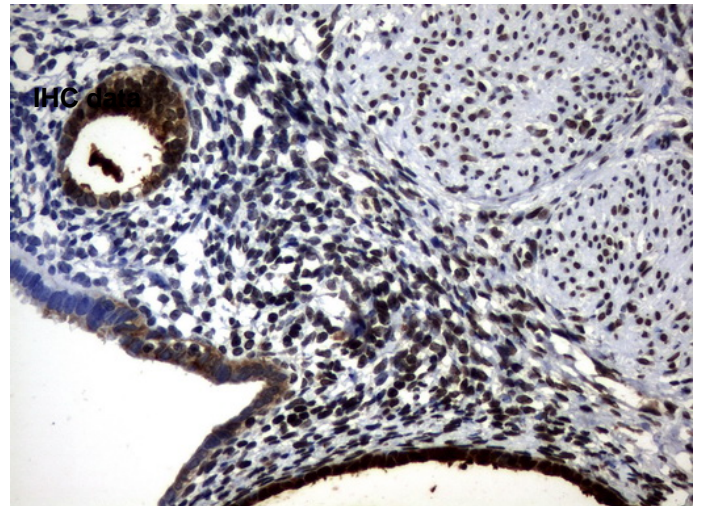
Buffer: PBS (PH 7.3) containing 1% BSA, 50% glycerol and 0.02% sodium azide.

Purification:

Purified from mouse ascites fluids by affinity chromatography

Background:

This gene encodes a protein that is a member of the WFDC domain family. The WFDC domain, or WAP Signature motif, contains eight cysteines forming four disulfide bonds at the core of the protein, and functions as a protease inhibitor in many family members. This gene is expressed in pulmonary epithelial cells, and was also found to be expressed in some ovarian cancers. The encoded protein is a small secretory protein, which may be involved in sperm maturation. [provided by RefSeq, Jul 2008].



Immunohistochemical staining of paraffin-embedded Human endometrium tissue using anti-WFDC2 mouse monoclonal antibody. (UM800019)

Related Product:

TrueORF cDNA clones
VERIFY Tagged Antigen lysates
HuSH-29 shRNA
Western Blot reagents
Anti-myc/DDK tag antibodies

* Peptide sequence of the DDK-tag (Flag®): N-DYKDDDDK-C Flag® is a registered trademark of Sigma-Aldrich

* More validation images may be available on our website:

<http://www.origene.com/antibody/UM800019.aspx>

This product is to be used for laboratory only. Not for diagnostic or therapeutic use.

© 2013 OriGene Technologies, Inc. 9620 Medical Center Dr., Suite 200, Rockville, MD 20850