

Name: JUN mouse monoclonal antibody, clone UMAB67
Product Data Sheet - UltraMAB

Catalog: UM800011

Gene Name: Homo sapiens jun proto-oncogene (JUN)
GeneBank accession: NM_002228
Isotype: IgG1

Reactivity: Human
Test application: WB
Clone Name: Clone UMAB67

Gene Synonym: AP-1; AP1; c-Jun

Validation Data:

Guaranteed Applications: IHC

Western Blot

Suggested Dilutions: IHC 1:100,

Immunogen: Full length human recombinant protein of human JUN (NP_002219) produced in E.coli.

Components:

- JUN mouse monoclonal antibody, clone UMAB67 (UM800011)

Amount:

UM800011 100ul

Concentration: 0.5~1.0 mg/ml (Lot Dependent)

Storage Condition: Shipped at 4C. Upon delivery store at -20C. Dilute in PBS (pH7.3) before use. Stable for 12 months from date of receipt. Avoid repeated freeze-thaws.

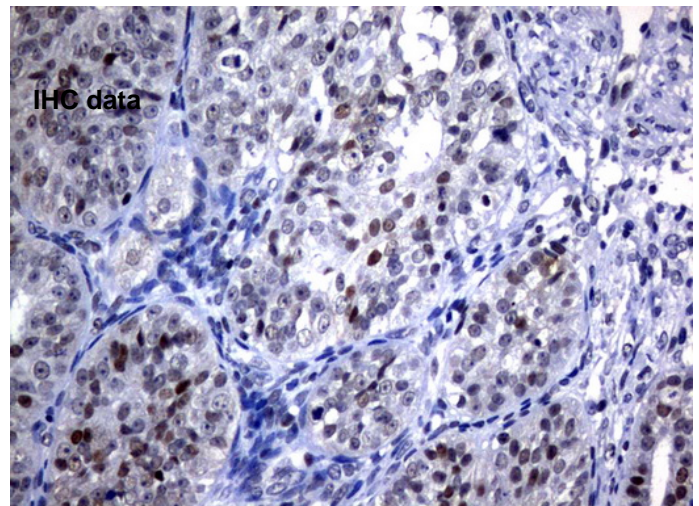
Buffer: PBS (PH 7.3) containing 1% BSA, 50% glycerol and 0.02% sodium azide.

Purification:

Purified from mouse ascites fluids by affinity chromatography

Background:

This gene is the putative transforming gene of avian sarcoma virus 17. It encodes a protein which is highly similar to the viral protein, and which interacts directly with specific target DNA sequences to regulate gene expression. This gene is intronless and is mapped to 1p32-p31, a chromosomal region involved in both translocations and deletions in human malignancies. [provided by RefSeq, Jul 2008].



Immunohistochemical staining of paraffin-embedded Adenocarcinoma of Human ovary tissue using anti-JUN mouse monoclonal antibody. (UM800011)

Related Product:

TrueORF cDNA clones
VERIFY Tagged Antigen lysates
HuSH-29 shRNA
Western Blot reagents
Anti-myc/DDK tag antibodies

* Peptide sequence of the DDK-tag (Flag®): N-DYKDDDDK-C Flag® is a registered trademark of Sigma-Aldrich

* More validation images may be available on our website:

<http://www.origene.com/antibody/UM800011.aspx>

This product is to be used for laboratory only. Not for diagnostic or therapeutic use.

© 2013 OriGene Technologies, Inc. 9620 Medical Center Dr., Suite 200, Rockville, MD 20850