

**Name: KLK8 mouse monoclonal antibody, clone UMAB85**

**Catalog: UM500069**

**Product Data Sheet - UltraMAB**

Gene Name: Homo sapiens kallikrein-related peptidase 8 (KLK8), transcript variant 1  
GeneBank accession: NM\_007196  
Isotype: IgG1

Reactivity: Human  
Test application: WB  
Clone Name: Clone UMAB85

**Gene Synonym:** HNP; NP; NRPN; PRSS19; TADG14

**Validation Data:**

**Guaranteed Applications:** IHC

**Western Blot**

**Suggested Dilutions:** IHC 1:100,

**Immunogen:** Full length human recombinant protein of human KLK8(NP\_009127) produced in HEK293T cell.

**Components:**

- KLK8 mouse monoclonal antibody, clone UMAB85 (UM500069)

**Amount:**

UM500069 100ul

**Concentration:** 0.5~1.0 mg/ml (Lot Dependent)

**Storage Condition:** Shipped at 4C. Upon delivery store at -20C. Dilute in PBS (pH7.3) before use. Stable for 12 months from date of receipt. Avoid repeated freeze-thaws.

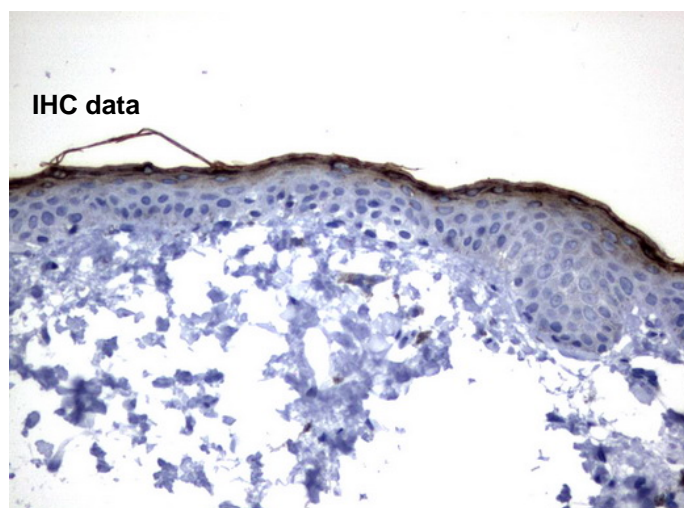
**Buffer:** PBS (PH 7.3) containing 1% BSA, 50% glycerol and 0.02% sodium azide.

**Purification:**

Purified from mouse ascites fluids by affinity chromatography

**Background:**

Kallikreins are a subgroup of serine proteases having diverse physiological functions. Growing evidence suggests that many kallikreins are implicated in carcinogenesis and some have potential as novel cancer and other disease biomarkers. This gene is one of the fifteen kallikrein subfamily members located in a cluster on chromosome 19. Alternate splicing of this gene results in four transcript variants encoding four different isoforms. The isoforms exhibit distinct patterns of expression that suggest roles in brain plasticity and ovarian cancer. [provided by RefSeq, Jul



Immunohistochemical staining of paraffin-embedded Human skin tissue using anti-KLK8 mouse monoclonal antibody. (UM500069)

**Related Product:**

TrueORF cDNA clones  
VERIFY Tagged Antigen lysates  
HuSH-29 shRNA  
Western Blot reagents  
Anti-myc/DDK tag antibodies

\* Peptide sequence of the DDK-tag (Flag®): N-DYKDDDDK-C Flag® is a registered trademark of Sigma-Aldrich

\* More validation images may be available on our website:

<http://www.origene.com/antibody/UM500069.aspx>

***This product is to be used for laboratory only. Not for diagnostic or therapeutic use.***

© 2013 OriGene Technologies, Inc. 9620 Medical Center Dr., Suite 200, Rockville, MD 20850