

**Name: NCAM1 mouse monoclonal antibody, clone UMAB83**  
**Product Data Sheet - UltraMAB**

**Catalog: UM500067**

Gene Name: Homo sapiens neural cell adhesion molecule 1 (NCAM1), transcript variant 2  
GeneBank accession: NM\_181351  
Isotype: IgG1

Reactivity: Human  
Test application: WB  
Clone Name: Clone UMAB83

**Gene Synonym:** CD56; MSK39; NCAM

**Validation Data:**

**Guaranteed Applications:** IHC, 10K-CHIP

**Western Blot**

**Suggested Dilutions:** IHC 1:100,

**Immunogen:** Human recombinant protein fragment corresponding to amino acids 20-718 of human NCAM1 (NP\_851996) produced in E.coli.

**Components:**

- NCAM1 mouse monoclonal antibody, clone UMAB83 (UM500067)

**Amount:**

UM500067 100ul

**Concentration:** 0.5~1.0 mg/ml (Lot Dependent)

**Storage Condition:** Shipped at 4C. Upon delivery store at -20C. Dilute in PBS (pH7.3) before use. Stable for 12 months from date of receipt. Avoid repeated freeze-thaws.

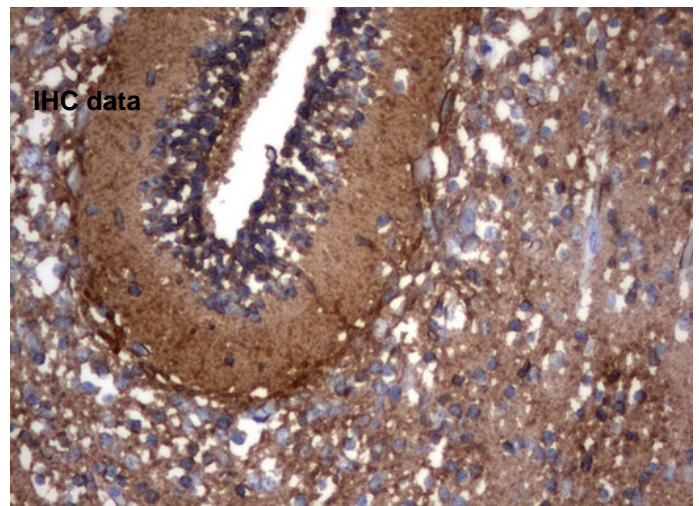
**Buffer:** PBS (PH 7.3) containing 1% BSA, 50% glycerol and 0.02% sodium azide.

**Purification:**

Purified from mouse ascites fluids by affinity chromatography

**Background:**

This gene encodes a cell adhesion protein which is a member of the immunoglobulin superfamily. The encoded protein is involved in cell-to-cell interactions as well as cell-matrix interactions during development and differentiation. The encoded protein has been shown to be involved in development of the nervous system, and for cells involved in the expansion of T cells and dendritic cells which play an important role in immune surveillance. Alternative splicing results in multiple transcript variants. [provided by RefSeq, Jun 2011].



Immunohistochemical staining of paraffin-embedded Human embryonic cerebellum using anti-NCAM1 mouse monoclonal antibody. (UM500067)

**Related Product:**

TrueORF cDNA clones  
VERIFY Tagged Antigen lysates  
HuSH-29 shRNA  
Western Blot reagents  
Anti-myc/DDK tag antibodies

\* Peptide sequence of the DDK-tag (Flag®): N-DYKDDDDK-C Flag® is a registered trademark of Sigma-Aldrich

\* More validation images may be available on our website:

<http://www.origene.com/antibody/UM500067.aspx>

***This product is to be used for laboratory only. Not for diagnostic or therapeutic use.***