

Name:KRT18 mouse monoclonal antibody, clone UMAB50
Product Data Sheet - UltraMAB

Catalog: UM500045

Gene Name:Homo sapiens keratin 18 (KRT18), transcript variant 2
GeneBank accession: NM_199187
Isotype: IgG1

Reactivity: Human
Test application: WB
Clone Name: Clone UMAB50

Gene Synonym: CYK18; K18

Validation Data:

Guaranteed Applications: IHC

Western Blot

Suggested Dilutions: IHC 1:100,

Immunogen: Human recombinant protein fragment corresponding to amino acids 69-372 of human KRT18 (NP_000215) produced in E.coli.

Components:

- KRT18 mouse monoclonal antibody, clone UMAB50 (UM500045)

Amount:

UM500045 100ul

Concentration: 0.5~1.0 mg/ml (Lot Dependent)

Storage Condition: Shipped at 4C. Upon delivery store at -20C. Dilute in PBS (pH7.3) before use. Stable for 12 months from date of receipt. Avoid repeated freeze-thaws.

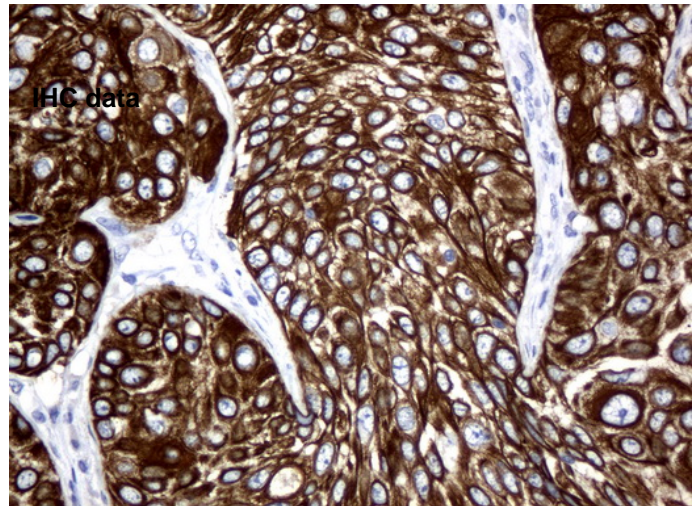
Buffer: PBS (PH 7.3) containing 1% BSA, 50% glycerol and 0.02% sodium azide.

Purification:

Purified from mouse ascites fluids by affinity chromatography

Background:

KRT18 encodes the type I intermediate filament chain keratin 18. Keratin 18, together with its filament partner keratin 8, are perhaps the most commonly found members of the intermediate filament gene family. They are expressed in single layer epithelial tissues of the body. Mutations in this gene have been linked to cryptogenic cirrhosis. Two transcript variants encoding the same protein have been found for this gene. [provided by RefSeq, Jul



Immunohistochemical staining of paraffin-embedded Carcinoma of Human lung tissue using anti-KRT18 mouse monoclonal antibody. (UM500045)

Related Product:

TrueORF cDNA clones
VERIFY Tagged Antigen lysates
HuSH-29 shRNA
Western Blot reagents
Anti-myc/DDK tag antibodies

* Peptide sequence of the DDK-tag (Flag®): N-DYKDDDDK-C Flag® is a registered trademark of Sigma-Aldrich

* More validation images may be available on our website:

<http://www.origene.com/antibody/UM500045.aspx>

This product is to be used for laboratory only. Not for diagnostic or therapeutic use.

© 2013 OriGene Technologies, Inc. 9620 Medical Center Dr., Suite 200, Rockville, MD 20850