

Name:ALDH1L1 mouse monoclonal antibody, clone UMAB44

Catalog: UM500040

Product Data Sheet - UltraMAB

Gene Name:Homo sapiens aldehyde dehydrogenase 1 family, member L1 (ALDH1L1), transcript variant 2
GeneBank accession: NM_012190
Isotype: IgG1

Reactivity: Human
Test application: WB
Clone Name: Clone UMAB44

Gene Synonym: 10-FTHF; 10-FTHFDH; FDH; FTHFD

Validation Data:

Guaranteed Applications: IHC

Western Blot

Suggested Dilutions: IHC 1:100,

Immunogen: Full length human recombinant protein of human ALDH1L1 (NP_036322) produced in HEK293T cell.

Components:

- ALDH1L1 mouse monoclonal antibody, clone UMAB44 (UM500040)

Amount:

UM500040 100ul

Concentration: 0.5~1.0 mg/ml (Lot Dependent)

Storage Condition: Shipped at 4C. Upon delivery store at -20C. Dilute in PBS (pH7.3) before use. Stable for 12 months from date of receipt. Avoid repeated freeze-thaws.

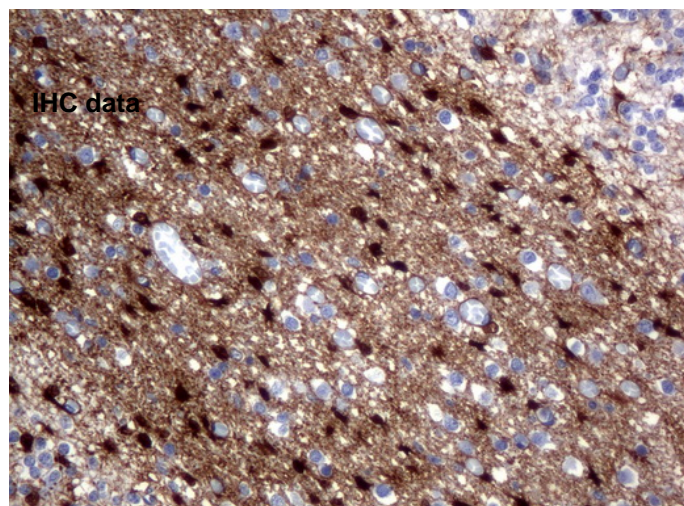
Buffer: PBS (PH 7.3) containing 1% BSA, 50% glycerol and 0.02% sodium azide.

Purification:

Purified from mouse ascites fluids by affinity chromatography

Background:

The protein encoded by this gene catalyzes the conversion of 10-formyltetrahydrofolate, nicotinamide adenine dinucleotide phosphate (NADP+), and water to tetrahydrofolate, NADPH, and carbon dioxide. The encoded protein belongs to the aldehyde dehydrogenase family. Loss of function or expression of this gene is associated with decreased apoptosis, increased cell motility, and cancer progression. There is an antisense transcript that overlaps on the opposite strand with this gene locus. Alternative splicing results in multiple transcript variants. [provided by RefSeq, Jun 2012].



Immunohistochemical staining of paraffin-embedded Human embryonic cerebellum using anti-ALDH1L1 mouse monoclonal antibody. (UM500040)

Related Product:

TrueORF cDNA clones
VERIFY Tagged Antigen lysates
HuSH-29 shRNA
Western Blot reagents
Anti-myc/DDK tag antibodies

* Peptide sequence of the DDK-tag (Flag®): N-DYKDDDDK-C Flag® is a registered trademark of Sigma-Aldrich

* More validation images may be available on our website:

<http://www.origene.com/antibody/UM500040.aspx>

This product is to be used for laboratory only. Not for diagnostic or therapeutic use.

© 2013 OriGene Technologies, Inc. 9620 Medical Center Dr., Suite 200, Rockville, MD 20850