

Name: ERBB2 mouse monoclonal antibody, clone UMAB36

Catalog: UM500036

Product Data Sheet - UltraMAB

Gene Name: Homo sapiens v-erb-b2 erythroblastic leukemia viral oncogene homolog 2, neuro/glioblastoma derived oncogene homolog (avian) (ERBB2), transcript variant 1
GeneBank accession: NM_004448
Isotype: IgG1

Reactivity: Human, Mouse, Rat, Monkey
Test application: WB
Clone Name: Clone UMAB36

Gene Synonym: CD340; HER-2; HER-2/neu; HER2; MLN19; NEU; NGL; TKR1

Guaranteed Applications: WB, IHC, IF, 10K-CHIP

Suggested Dilutions: WB:1:2000, IHC:1:50, IF:1:100

Immunogen: Human recombinant protein fragment corresponding to amino acids 676-1255 of human ERBB2(NP_004439) produced in HEK293T cell.

Components:

- ERBB2 mouse monoclonal antibody, clone UMAB36 (UM500036)

Amount:

UM500036 100ul

Concentration: 0.5~1.0 mg/ml (Lot Dependent)

Storage Condition: Shipped at 4C. Upon delivery store at -20C. Dilute in PBS (pH7.3) before use. Stable for 12 months from date of receipt. Avoid repeated freeze-thaws.

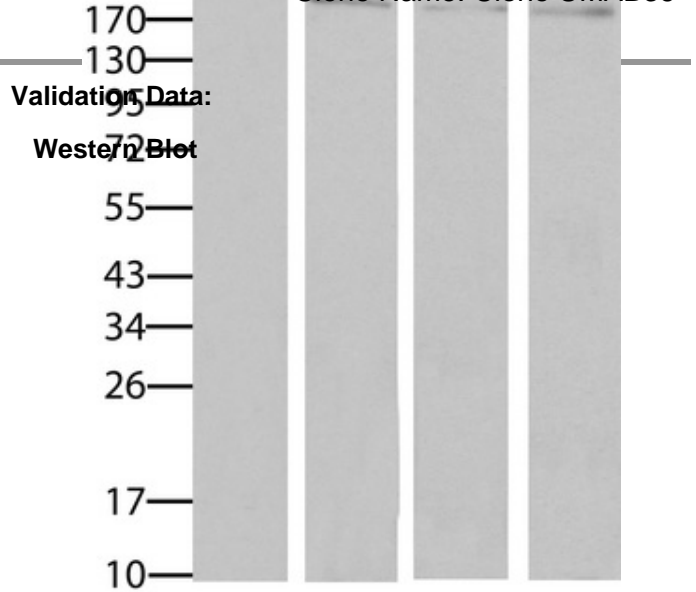
Buffer: PBS (PH 7.3) containing 1% BSA, 50% glycerol and 0.02% sodium azide.

Purification:

Purified from mouse ascites fluids by affinity chromatography

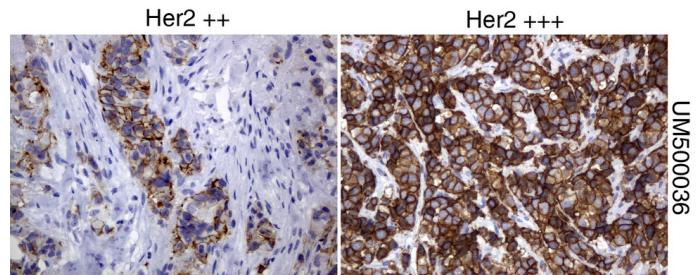
Background:

This gene encodes a member of the epidermal growth factor (EGF) receptor family of receptor tyrosine kinases. This protein has no ligand binding domain of its own and therefore cannot bind growth factors. However, it does bind tightly to other ligand-bound EGF receptor family members to form a heterodimer, stabilizing ligand binding and enhancing kinase-mediated activation of downstream signalling pathways, such as those involving mitogen-activated protein kinase and phosphatidylinositol-3 kinase. Allelic variations at amino acid positions 654 and 655 of isoform a (positions 624 and 625 of isoform b) have been reported, with the most common allele, Ile654/Ile655, shown here. Amplification and/or overexpression of this gene has been reported in numerous cancers, including breast and ovarian tumors. Alternative splicing results in several additional transcript variants, some encoding different isoforms and others that have not been fully characterized. [provided by RefSeq, Jul 2008].



Western blot analysis of extracts (35ug) from 9 different cell lines by using anti-ERBB2 monoclonal antibody (Clone UMAB36) at 1:500.

IHC data



Immunohistochemical staining of paraffin-embedded Carcinoma of breast tissue (HER2+++) using anti-ERBB2 mouse monoclonal antibody. (Clone UMAB36, Dilution 1:100)

Related Product:

- TrueORF cDNA clones
- VERIFY Tagged Antigen lysates
- HuSH-29 shRNA
- Western Blot reagents
- Anti-myc/DDK tag antibodies

* Peptide sequence of the DDK-tag (Flag®): N-DYKDDDDK-C Flag® is a registered trademark of Sigma-Aldrich

* More validation images may be available on our website:

<http://www.origene.com/antibody/UM500036.aspx>

This product is to be used for laboratory only. Not for diagnostic or therapeutic use.