

Name: PECAM1 mouse monoclonal antibody, clone UMAB32
Product Data Sheet - UltraMAB

Catalog: UM500032

Gene Name: Homo sapiens platelet/endothelial cell adhesion molecule 1 (PECAM1)
GeneBank accession: NM_000442
Isotype: IgG1

Reactivity: Human
Test application: WB
Clone Name: Clone UMAB32

Gene Synonym: CD31; CD31/EndoCAM; endoCAM; GPIIA ; PECA1; PECAM-1

Validation Data:

Guaranteed Applications: WB, IHC, 10K-CHIP

Western Blot

Suggested Dilutions: WB 1:500~2000, IHC 1:150,

Immunogen: Full length human recombinant protein of human PECAM1(NP_000433) produced in HEK293T cell.

Components:

- PECAM1 mouse monoclonal antibody, clone UMAB32 (UM500032)

Amount:

UM500032 100ul

Concentration: 0.5~1.0 mg/ml (Lot Dependent)

Storage Condition: Shipped at 4C. Upon delivery store at -20C. Dilute in PBS (pH7.3) before use. Stable for 12 months from date of receipt. Avoid repeated freeze-thaws.

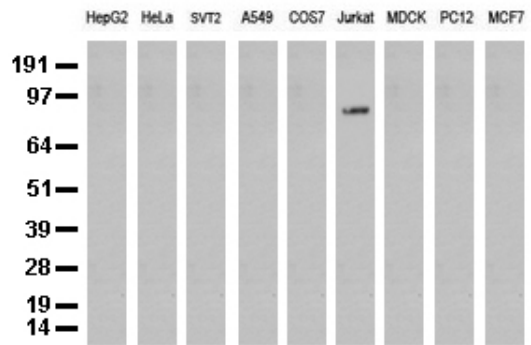
Buffer: PBS (PH 7.3) containing 1% BSA, 50% glycerol and 0.02% sodium azide.

Purification:

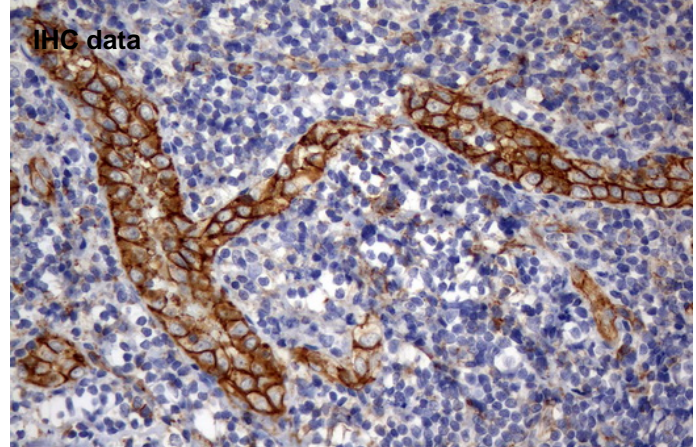
Purified from mouse ascites fluids by affinity chromatography

Background:

The protein encoded by this gene is found on the surface of platelets, monocytes, neutrophils, and some types of T-cells, and makes up a large portion of endothelial cell intercellular junctions. The encoded protein is a member of the immunoglobulin superfamily and is likely involved in leukocyte migration, angiogenesis, and integrin activation. [provided by RefSeq].



Western blot analysis of extracts (35ug) from 9 different cell lines by using anti-PECAM1 monoclonal antibody (Clone UMAB32) at 1:500.



Immunohistochemical staining of paraffin-embedded lymph node tissue using anti-PECAM1 mouse monoclonal antibody. (Clone UMAB32, Dilution 1:100)

Related Product:

- TrueORF cDNA clones
- VERIFY Tagged Antigen lysates
- HuSH-29 shRNA
- Western Blot reagents
- Anti-myc/DDK tag antibodies

* Peptide sequence of the DDK-tag (Flag®): N-DYKDDDDK-C Flag® is a registered trademark of Sigma-Aldrich

* More validation images may be available on our website:

<http://www.origene.com/antibody/UM500032.aspx>

This product is to be used for laboratory only. Not for diagnostic or therapeutic use.