

**Name: FOLH1 mouse monoclonal antibody, clone UMAB27**

**Catalog: UM500027**

**Product Data Sheet - UltraMAB**

Gene Name: Homo sapiens folate hydrolase (prostate-specific membrane antigen) 1 (FOLH1), transcript variant 1  
GeneBank accession: NM\_004476  
Isotype: IgG1

Reactivity: Human  
Test application: WB  
Clone Name: Clone UMAB27

**Gene Synonym:** FGCP; FOLH; GCP2; GCPII; mGCP; NAALAD1; NAALAdase; PSM; PSMA

**Validation Data:**

**Western Blot**

**Guaranteed Applications:** IHC, 10K-CHIP

**Suggested Dilutions:** WB 1:2000, FLOW 1:100,

**Immunogen:** Full length human recombinant protein of human FOLH1(NP\_004467) produced in HEK293T cell.

**Components:**

- FOLH1 mouse monoclonal antibody, clone UMAB27 (UM500027)

**Amount:**

UM500027 100ul

**Concentration:** 0.5~1.0 mg/ml (Lot Dependent)

**Storage Condition:** Shipped at 4C. Upon delivery store at -20C. Dilute in PBS (pH7.3) before use. Stable for 12 months from date of receipt. Avoid repeated freeze-thaws.

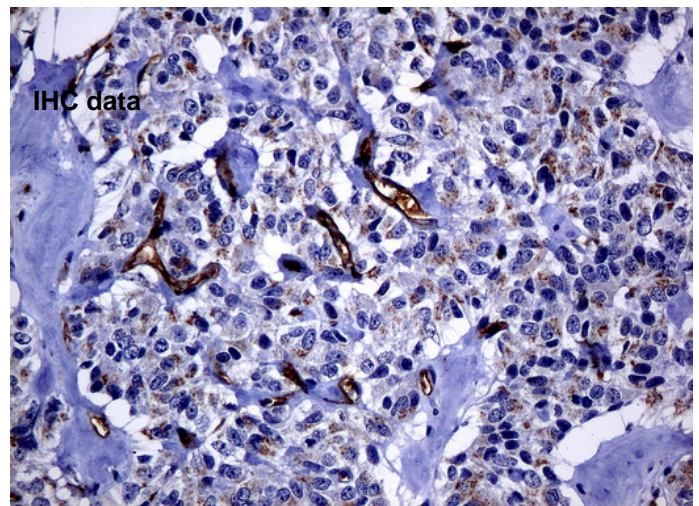
**Buffer:** PBS (PH 7.3) containing 1% BSA, 50% glycerol and 0.02% sodium azide.

**Purification:**

Purified from mouse ascites fluids by affinity chromatography

**Background:**

This gene encodes a type II transmembrane glycoprotein belonging to the M28 peptidase family. The protein acts as a glutamate carboxypeptidase on different alternative substrates, including the nutrient folate and the neuropeptide N-acetyl-L-aspartyl-L-glutamate and is expressed in a number of tissues such as prostate, central and peripheral nervous system and kidney. A mutation in this gene may be associated with impaired intestinal absorption of dietary folates, resulting in low blood folate levels and consequent hyperhomocysteinemia. Expression of this protein in the brain may be involved in a number of pathological conditions associated with glutamate excitotoxicity. In the prostate the protein is up-regulated in cancerous cells and is used as an effective diagnostic and prognostic indicator of prostate cancer. This gene likely arose from a duplication event of a nearby chromosomal region. Alternative splicing gives rise to multiple transcript variants encoding several different isoforms. [provided by RefSeq].



Immunohistochemical staining of paraffin-embedded Carcinoma of pancreas tissue using anti-FOLH1 mouse monoclonal antibody. (Clone UMAB27, Dilution 1:100)

**Related Product:**

TrueORF cDNA clones  
VERIFY Tagged Antigen lysates  
HuSH-29 shRNA  
Western Blot reagents  
Anti-myc/DDK tag antibodies

\* Peptide sequence of the DDK-tag (Flag®): N-DYKDDDDK-C Flag® is a registered trademark of Sigma-Aldrich

\* More validation images may be available on our website:

<http://www.origene.com/antibody/UM500027.aspx>

***This product is to be used for laboratory only. Not for diagnostic or therapeutic use.***

© 2013 OriGene Technologies, Inc. 9620 Medical Center Dr., Suite 200, Rockville, MD 20850