

**Name: CDH2 mouse monoclonal antibody, clone UMAB23**  
**Product Data Sheet - UltraMAB**

**Catalog: UM500023**

Gene Name: Homo sapiens cadherin 2, type 1, N-cadherin (neuronal) (CDH2)  
GeneBank accession: NM\_001792  
Isotype: IgG2a

Reactivity: Human  
Test application: WB  
Clone Name: Clone UMAB23

**Gene Synonym:** CD325; CDHN; CDw325; NCAD

**Validation Data:**

**Guaranteed Applications:** IHC

**Western Blot**

**Suggested Dilutions:** WB 1:2000, IHC 1:150, FLOW 1:100,

**Immunogen:** Full length human recombinant protein of human CDH2(NP\_001783) produced in HEK293T cell.

**Components:**

- CDH2 mouse monoclonal antibody, clone UMAB23 (UM500023)

**Amount:**

UM500023 100ul

**Concentration:** 0.5~1.0 mg/ml (Lot Dependent)

**Storage Condition:** Shipped at 4C. Upon delivery store at -20C. Dilute in PBS (pH7.3) before use. Stable for 12 months from date of receipt. Avoid repeated freeze-thaws.

**Buffer:** PBS (PH 7.3) containing 1% BSA, 50% glycerol and 0.02% sodium azide.

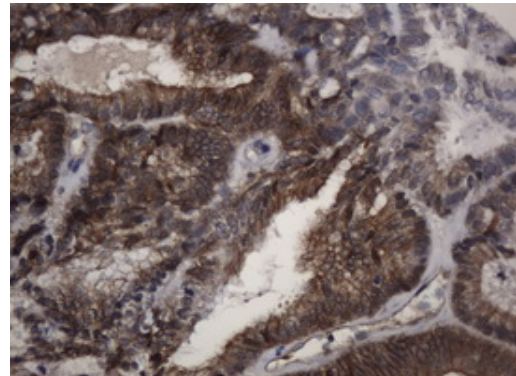
**Purification:**

Purified from mouse ascites fluids by affinity chromatography

**Background:**

This gene is a classical cadherin from the cadherin superfamily. The encoded protein is a calcium dependent cell-cell adhesion glycoprotein comprised of five extracellular cadherin repeats, a transmembrane region and a highly conserved cytoplasmic tail. The protein functions during gastrulation and is required for establishment of left-right asymmetry. At certain central nervous system synapses, presynaptic to postsynaptic adhesion is mediated at least in part by this gene product. [provided by RefSeq].

**IHC data**



Immunohistochemical staining of paraffin-embedded Adenocarcinoma of Human endometrium tissue using anti-CDH2 mouse monoclonal antibody. (Clone UMAB23, Dilution 1:100)

**Related Product:**

TrueORF cDNA clones  
VERIFY Tagged Antigen lysates  
HuSH-29 shRNA  
Western Blot reagents  
Anti-myc/DDK tag antibodies

\* Peptide sequence of the DDK-tag (Flag®): N-DYKDDDDK-C Flag® is a registered trademark of Sigma-Aldrich

\* More validation images may be available on our website:

<http://www.origene.com/antibody/UM500023.aspx>

***This product is to be used for laboratory only. Not for diagnostic or therapeutic use.***