

Name: XPF mouse monoclonal antibody, clone UMAB20
Product Data Sheet - UltraMAB

Catalog: UM500020

Gene Name: Homo sapiens excision repair cross-complementing rodent repair deficiency, complementation group 4 (ERCC4)
GeneBank accession: NM_005236
Isotype: IgG2a

Reactivity: Human , Dog , Rat , Monkey , Mouse
Test application: WB
Clone Name: Clone UMAB20

Gene Synonym: ERCC11; FANCD1; RAD1; XPF

Guaranteed Applications: WB, IHC, 10K-CHIP

Suggested Dilutions: WB 1:500~2000, IF 1:100, FLOW 1:100, IHC 1:500

Immunogen: Full length human recombinant protein of human XPF (NP_005227) produced in HEK293 cell.

Components:

- XPF mouse monoclonal antibody, clone UMAB20 (UM500020)

Amount:

UM500020 100ul

Concentration: 0.5~1.0 mg/ml (Lot Dependent)

Storage Condition: Shipped at 4C. Upon delivery store at -20C. Dilute in PBS (pH7.3) before use. Stable for 12 months from date of receipt. Avoid repeated freeze-thaws.

Buffer: PBS (PH 7.3) containing 1% BSA, 50% glycerol and 0.02% sodium azide.

Purification:

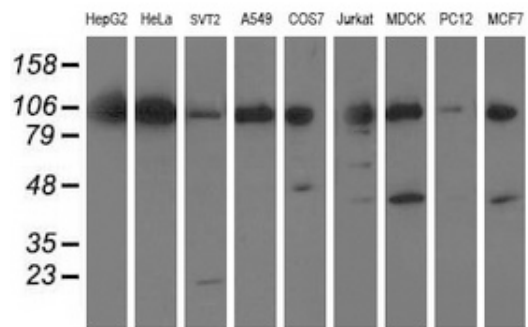
Purified from mouse ascites fluids by affinity chromatography

Background:

The protein encoded by this gene forms a complex with ERCC1 and is involved in the 5' incision made during nucleotide excision repair. This complex is a structure specific DNA repair endonuclease that interacts with EME1. Defects in this gene are a cause of xeroderma pigmentosum complementation group F (XP-F), or xeroderma pigmentosum VI (XP6).

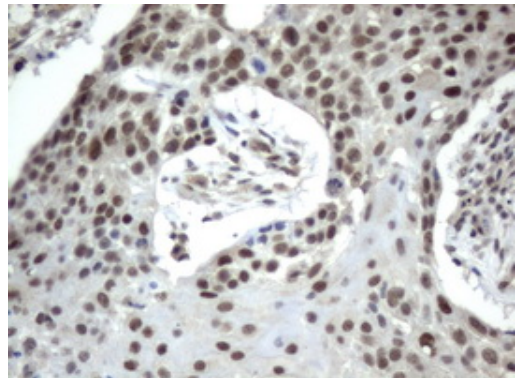
Validation Data:

Western Blot



Western blot analysis of crude cell extracts (35ug) from 9 different cell lines by using anti-XPF (UMAB20) monoclonal antibody.

IHC data



Immunohistochemical staining of paraffin-embedded Carcinoma of lung tissue using anti-XPF (UMAB20) mouse monoclonal antibody. (UM500020, Dilution 1:50)

Related Product:

TrueORF cDNA clones
VERIFY Tagged Antigen lysates
HuSH-29 shRNA
Western Blot reagents
Anti-myc/DDK tag antibodies

* Peptide sequence of the DDK-tag (Flag®): N-DYKDDDDK-C Flag® is a registered trademark of Sigma-Aldrich

* More validation images may be available on our website:

<http://www.origene.com/antibody/UM500020.aspx>

This product is to be used for laboratory only. Not for diagnostic or therapeutic use.

© 2013 OriGene Technologies, Inc. 9620 Medical Center Dr., Suite 200, Rockville, MD 20850