

Name: anti-CD2 mouse monoclonal antibody, clone UMAB6

Catalog: UM500006

Product Data Sheet - UltraMAB

Gene Name: Homo sapiens CD2 molecule (CD2)
GeneBank accession: NM_001767
Isotype: IgG1

Reactivity: Human
Test application: WB
Clone Name: Clone UMAB6

Gene Synonym: LFA-2; SRBC; T11

Guaranteed Applications: WB, IHC, 10K-CHIP

Suggested Dilutions: WB 1:2000

Immunogen: Protein expressed in 293T cell transfected with human CD2 expression vector

Components:

- anti-CD2 mouse monoclonal antibody, clone UMAB6 (UM500006)

Amount:

UM500006 100ul

Concentration: 0.5~1.0 mg/ml (Lot Dependent)

Storage Condition: Shipped at 4C. Upon delivery store at -20C. Dilute in PBS (pH7.3) before use. Stable for 12 months from date of receipt. Avoid repeated freeze-thaws.

Buffer: PBS (pH 7.3) containing 1% BSA, 50% glycerol and 0.02% sodium azide.

Purification:

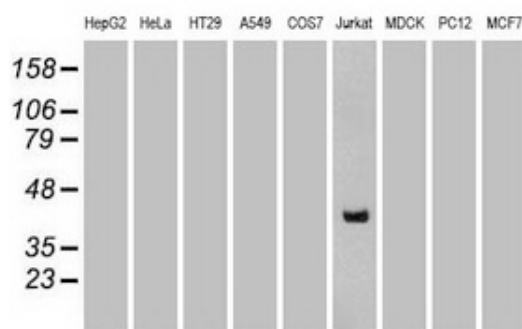
Purified from mouse ascites fluids by affinity chromatography

Background:

CD2 interacts with lymphocyte function-associated antigen (LFA-3) and CD48/BCM1 to mediate adhesion between T-cells and other cell types. CD2 is implicated in the triggering of T-cells, the cytoplasmic domain is implicated in the signaling function

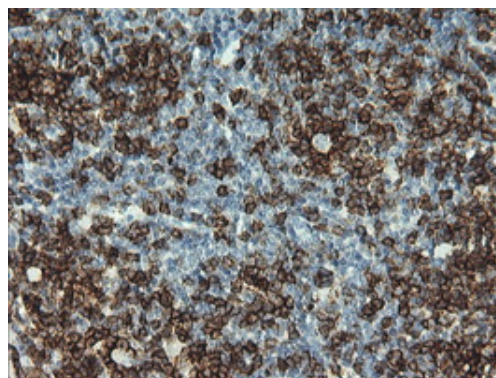
Validation Data:

Western Blot



Western blot analysis of extracts (35ug) from 9 different cell lines by using anti-CD2 monoclonal antibody (Clone UMAB6).

IHC data



Immunohistochemical staining of paraffin-embedded Human lymphoma tissue using anti-CD2 mouse monoclonal antibody. (Clone UMAB6, dilution 1:100)

Related Product:

- TrueORF cDNA clones
- VERIFY Tagged Antigen lysates
- HuSH-29 shRNA
- Western Blot reagents
- Anti-myc/DDK tag antibodies

* Peptide sequence of the DDK-tag (Flag®): N-DYKDDDDK-C Flag® is a registered trademark of Sigma-Aldrich

* More validation images may be available on our website:

<http://www.origene.com/antibody/UM500006.aspx>

This product is to be used for laboratory only. Not for diagnostic or therapeutic use.